



The Old Campus is Changing

The construction of the Health Sciences and Business Administration Building on VSU's Ray and Lillian Steele North Campus has been easily observed by the community. Of note is that this is the first building on the "main campus of north campus" since the closing of Emory-at-Valdosta [EAV] in 1953.

The opening of EAV in 1928 required \$150,000 from the City of Valdosta to construct the Administration Building. This goal was met and also an endowment established. Between what Valdosta citizens gave to begin VSU, 1906 to 1913, and to begin EAV, 1927-28, its facilities now public, perhaps no other south Georgia town, or maybe any town in Georgia, has given as much to bring public higher education to their area of the state.



The article that follows appeared in the May 24, 1953, issue of *The Emory Spoke*, student newspaper of E-A-V. A scan of the title and banner headline are on page three of this newsletter.

The writer of the article was T. Elkin Taylor. We were pleased to find him and his wife residing in Bethesda, MD, and had a pleasant and informative telephone conversation with them. He grew up in Colquitt County and after E-A-V graduated, bachelors and masters, from "Big Emory." He spent years in foreign service in the diplomatic corps. He received a PhD from the University of Virginia and continues to teach college history classes.

Editorial: In Retrospect

With the announcement of the end of negotiations for the closing of Emory-at-Valdosta and the acceptance of the Emory plant for use by Valdosta State College following closely on the heels of myriad rumors, which have been circulating for some time; a group of students and faculty members are now faced with a new problem created by the change. It is something not entirely unexpected, for the gradually decreasing number of students enrolled in the school seemed to spell a fateful end unless a new and more successful program had been adopted.

Celebrating its silver anniversary, Emory-at-Valdosta died. Looking back, now, its death seems inevitable; but why should it have been? There have always been abundant opportunities for acquiring an education, and the facilities and

individual attention would seem to attract many serious students who are either planning to enter the professions or merely seeking a sound education.

As the rumors of the closing of the school spread and became obviously more authentic, there was a rising feeling of disappointment and even disillusionment on the part of the students. It is not without misgivings that most of the students view the fall of the institution. It is somewhat surprising that the sophomores were as much disturbed as the freshmen, if not more so. They have been here longer and have perhaps become more attached to it. That is only natural.

History of EAV

After the closing of Sparks College at Sparks, GA, in the late twenties, there was recognized by the South Georgia Conference of the Methodist Church a need for a Methodist junior college to serve the young men of South Georgia and North Florida. In 1928, in cooperation and conjunction with the city of Valdosta and Emory University, the Church aided in setting up Emory-at-Valdosta. The people of Valdosta, sensing the importance of having a junior college, raised more than \$200,000 for that purpose. The Administration Building and College Inn were the only structures comprising the campus in 1928, the first year of operation. W. B. Stubbs was dean of the college from 1928 until 1937. (con't. page 3)

A Few Local Notes on E-A-V:

First Students in 1928

EAV faculty to VSC faculty

EAV students become VSC students

EAV students to VSC faculty & Staff

And Surprisingly VSC (GSWC) to EAV



Above: Dr. Robert L. Stump, MD, in the 1967 **Pinecone** as College Physician for VSC, EAV student 1932-34. With him are Flora Varnedoe, Mary Rogers and Hannah Bland. Dr. Stump turns 99 on Feb. 13. An EAV student to VSC staff, he confirmed information in this newsletter.



Above: Dr. Ward Pafford, pictured when Dean of the College at VSC in the 1967 **Pinecone** yearbook. He was brought to Valdosta by VSC president Dr. S. Walter Martin, former president of Emory University. Dr. Pafford represents three of the areas listed in our "Notes on EAV." First, Dr. Pafford was in the inaugural class at EAV in 1928. The book **Pride and Abandonment: the Story of Emory-at-Valdosta, 1928-1953** lists him as a Savannah resident and student from 1928-1930. Second, as an EAV student that became VSC faculty/ administration; and third, as EAV faculty that became VSC faculty /administration. His time as EAV faculty was before WWII, moving to Emory Atlanta when EAV closed during WWII.

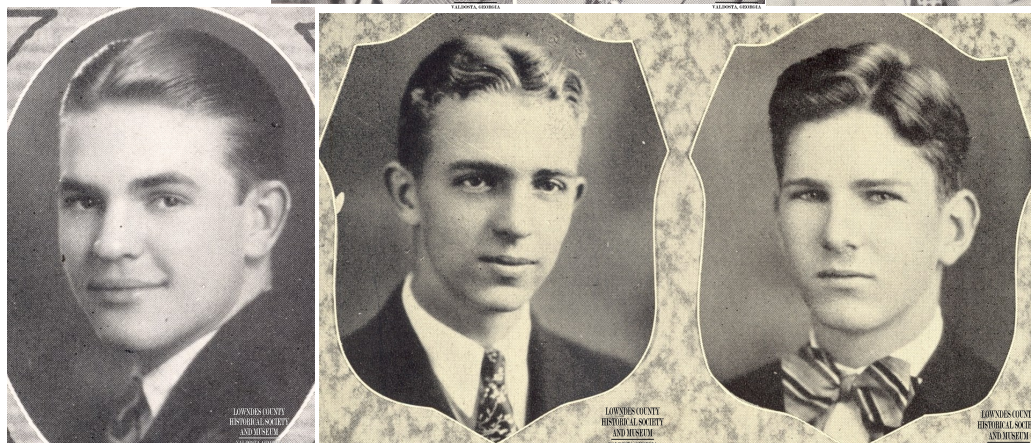
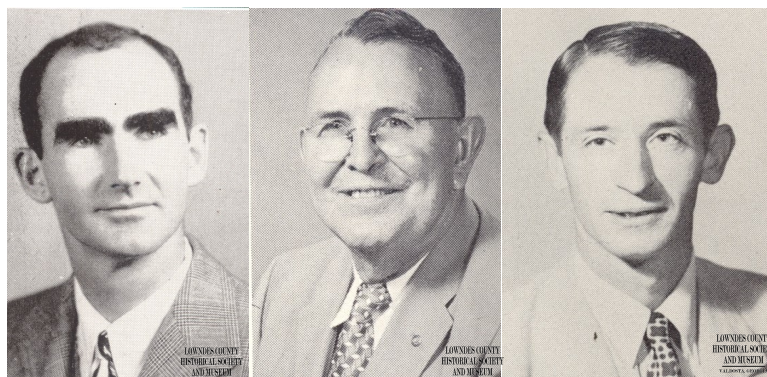
Dr. Pafford completed his active academic career as President of West Georgia College in Carrollton. He and his wife often returned to Valdosta in their retirement years. He passed away in at age 99 in 2011 having maintained many relationships with those in Valdosta.



Above: Margaret Baker as EAV librarian in their 1948 yearbook, **Prologue** with degrees listed from GSWC (VSU) and UNC. She became Director of South Georgia Regional Libraries.

Left: 1928 local students in the inaugural EAV class included: Earle S. McKey, Jr., M.D., photo from the VHS 1926, **The Dosta**; Peyton Lawson and Chandler Jones, panel photo from the VHS 1928, **The Dosta**, listing them as Editor & Business Manager of **The Dosta**.

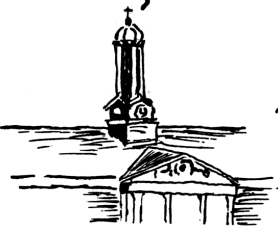
Right: Walter Cottingham, Physical Education; Dr. Harold Gulliver, German at EAV, and Dr. Marvin Evans, English and French at EAV, are three EAV faculty that became VSC faculty. Dr. Rudolph Howell in Mathematics was another eventual VSU professor.



thought you might be interested in this.

READ
SPOKE
ADS

The Emory Spoke



“THE PULSE OF THE CAMPUS”

ATTEND
CHURCH
SUNDAY

Vol. VI. No. XIV Emory-at-Valdosta, Valdosta, Georgia Thursday, May 24, 1953

Emory-At-Valdosta Closes

(from pg.1) In 1928 there were only 40 or 45 students enrolled in Emory-at-Valdosta, and, in the lean years that followed, the number of students rose rather gradually. There was, however, a tradition growing up about the school, and it was finding its way into a prominent position in the educational circles of South Georgia and Florida. In 1930 the Old Brick Dormitory was constructed; and in 1936, as a part of the centennial celebration ceremonies of Emory University, Centennial Swimming Pool was built and dedicated at Emory-at-Valdosta.

In 1937 Dean Stubbs was replaced by Hollis Edens, now president of Duke University. Under the leadership of Dean Edens the school continued to grow and develop. The student body became larger, and the facilities were being improved, until they are now a great deal more adequate. In June, 1942, as a result of increased cost of operation and the drop in enrollment, Emory-at-Valdosta closed for the duration of the war. It was understood, however, that the school would reopen after the war. Fall Quarter, 1946, was the next quarter of operation. Coming to Emory that year was a new faculty, including Mr. Dan C. Moore, Mr. R. Linton Cox, and Dean E. D. Whisonant.

Swamp Inn and the gymnasium were imported in 1946 and 1947, respectively; and the year after, plans were made for construction of the New Brick Dormitory. It was completed in the summer of 1951. Immediately after the war the enrollment skyrocketed to nearly three hundred students, but, with the subsiding flow of veterans in school, the number dropped. This was, however, only natural and should not have indicated the fate that eventually developed. The attraction for pre-professional students should have made up for much of the slack.

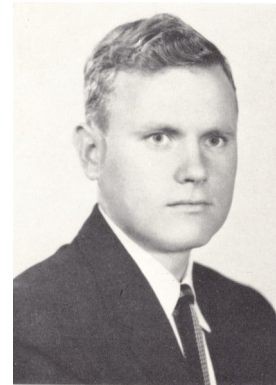
Today there are only sixty-five students (loose usage of the term) attending EAV. It is not the purpose of the Spoke or the editorialist to speculate on where the fault lies, but each person in any way connected with the college should evaluate the matter, determine whether Emory-at-Valdosta has failed for him, and answer the question, "If it has failed for me, why?"

Many of those associated with the school feel very deeply for our Alma Mater. For them it is more than a school, a job, or a place of learning, It is something of a symbol for achievement and a definite part of their lives.

For Mrs. J. D. King, who began working for the school as secretary on the first year of its operation and has not missed a year of its operation, there are a thousand memories of what has gone before. Of particular interest was the story of the clock, which has become the symbol of Emory-at-Valdosta.

Not until Dean Edens became dean of the college were any hands and works installed in the clock tower. Mrs. King said that it was a common prank for the boys to climb onto the roof of the Ad building and paint hands on the four faces of the clock, each hand telling a different time. Under Eden's the money was raised for the installation of the works of the clock and the faces were lighted. During the war the clock was stopped until the reopening of the school. For many of us, it will stop again on June 7, never to run again.—T. E. T.

Above: The newspaper image is taken from *The Emory Spoke*, May 24, 1953, this issue in the museum archives. The long standing newspaper at "Big Emory" is *The Emory Wheel*, so it interesting that E-A-V titled its paper *The Emory Spoke*. An internet search shows that in 1976 Emory students began a new "humorous" publication named *The Emory Spoke* that continues today.



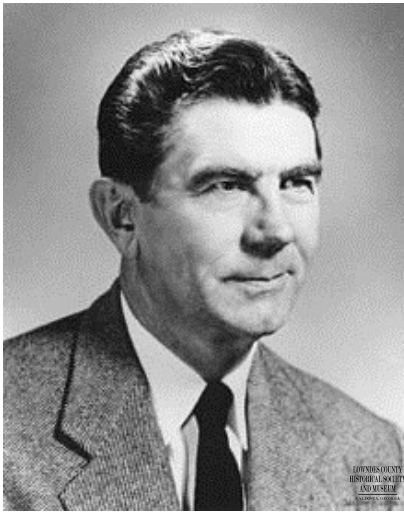
Left:

V.L. Daughtery, now a retired Methodist minister in Valdosta. Photo from the 1955 VSC yearbook where he was Student Government president his senior year. He was in EAV's last class in 1953.

Surprising things we didn't know

Rev. V.L. Daughtery and Johnny B. Lastinger, EAV '49-'51, came to the museum to possibly identify photos from the recently donated Rema Sapp Collection. VSC becoming coed in 1950 reduced Georgia male enrollment at EAV, along with WWII vets completing college. In its last year EAV had more Florida than Georgia students. "Rev. V.L." then told a surprising story as to a final cause for EAV closing - Medical schools were established in Florida. Florida students would attend EAV to be on track for Emory, and then possibly Emory medical or dental schools. Although hard to believe, the University of Florida Medical School did not open until 1956, private school Miami in 1952. Therefore Florida students could now be on track for medical school within the state of Florida.

He told that it took lots of study to be a pre-ministerial student in chemistry and other classes with so many pre-med, dental and law students.



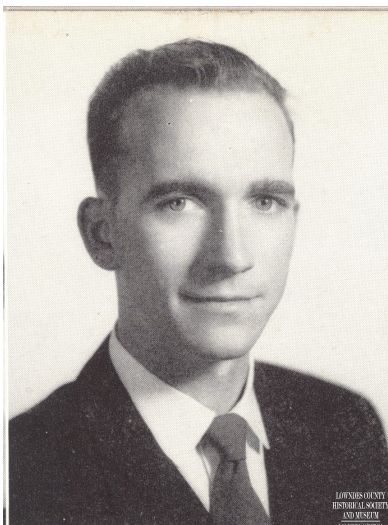
Hollis Edens, The Dean, then Duke The Four Faces of E-A-V : A Clock Tower Tale

In his article, reprinted in this newsletter, T. Elkin Taylor related the story of the clock in tower of the EAV Administration Building. This is the building know as Pound Hall (Jere M. Pound, second VSU president) with the academic designation Harley Langdale, Jr., College of Business Administration. To make note, the EAV record lists Harley Langdale, Jr., registered as a student during 1931-'32.

But back to the clock and tower. Elkin Taylor records a story related to him by Emma King, who was EAV secretary its entire existence. Evidently the money was not available in 1928 to purchase the mechanical workings for the four faced clock to operate. At the recent Valdosta Rotary Clubs joint Christmas Party, I asked Dr. Robert Stump, at EAV 1932-'34, to tell me about the EAV tower clock. He immediately replied, "There was nothing in it. No hands. It didn't operate." Emma King related to Elkins that in the early years students had climbed the tower and painted hands on all four clocks, each with a different time.



Hollis Edens, **photo left above**, became Dean (no president at the junior college) from 1937 until 1942 when EAV closed during WWII. During his tenure he saw that money was raised to purchase the internal workings and hands for the four faces of the clock. It is interesting to note that Dr. Edens became president of Duke University from 1949 to 1960. He died fairly young in 1968. The Wallace Law Group will like knowing in 1940, as per census, he resided at 102 W.Moore.

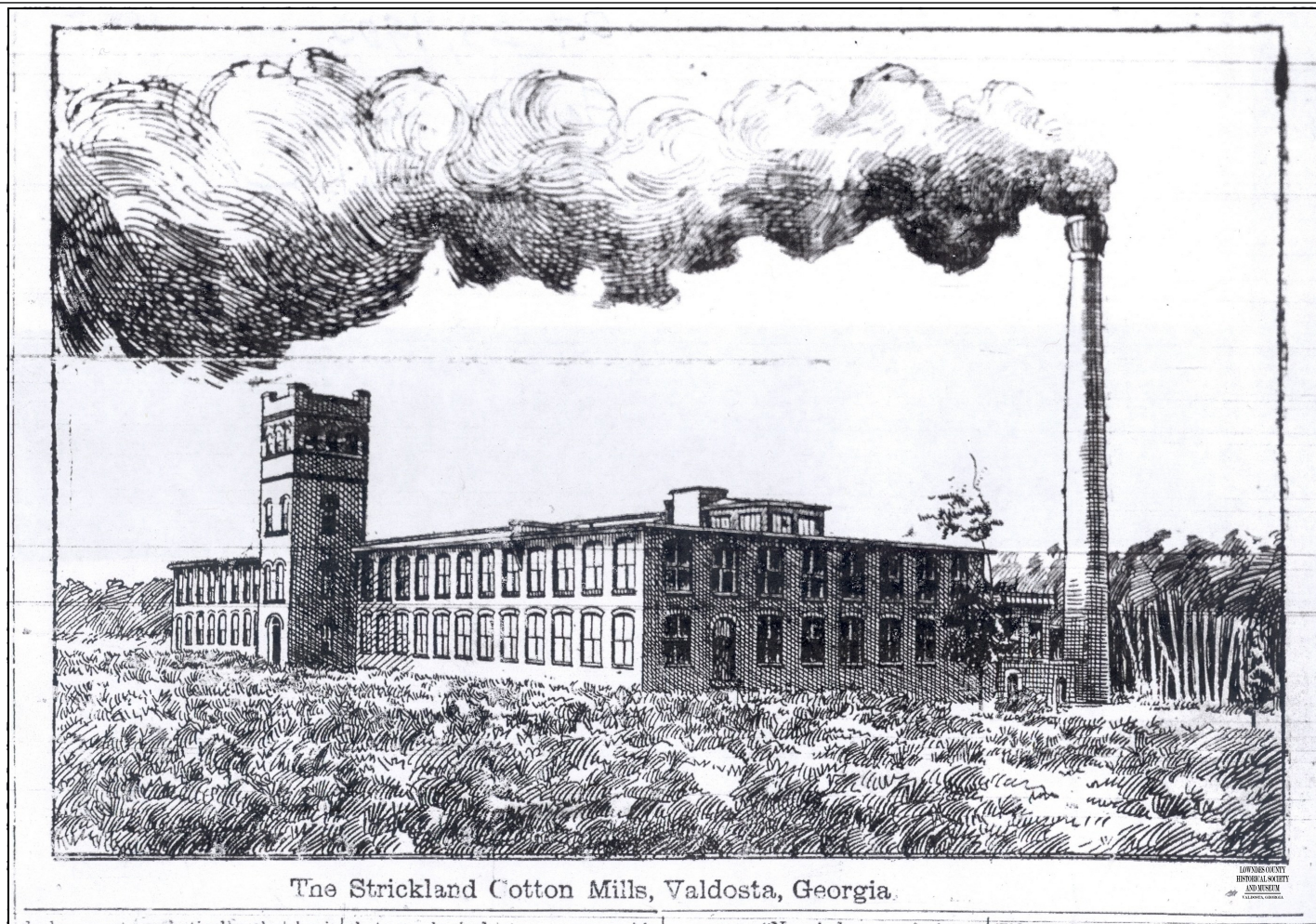


Rema Sapp photo collection: EAV "Rats" & VSC to Cuba

And many more. This recent donation to the museum archives spurred my contemplation of writing about Emory-at-Valdosta into actually doing so. The new Health Sciences and Business Administration Building is the first on the main campus of North Campus since EAV construction ended with Barrow Hall in the early 1950s. This collection helps revisit the old campus.

His collection was donated by his daughter Mary Sapp Powell, who is married to Valdosta dentist Dr. Pat Powell. Mary was prompted into action in submitting photos for the recent **Valdosta Times** and First State Bank **Lowndes County Memories: 1800s-1970s**. Rema Harris Sapp, Jr., **photo left**, attended EAV from 1948 to 1950. His hometown was Douglas, GA.. He gradated from VSC in 1952 and his wife Mary Carter graduated in 1951. He had a photography business in Valdosta a few years before graduating from UGA pharmacy school.

The collection pictures community events and some family portraits. However, the greatest part of the collection includes dozens of photographs centering circa 1950 at EAV and VSC. He also has two photos that give evidence the tower clock once worked. (*See story above*) A west face shot where the clock shows 3:50 and of the south face 4:00, just a few minutes later.



Mill Bricks Distributed at Reunion

The Remerton Reunion Committee contacted the museum about attending their first reunion after the deconstruction of Strickland Cotton Mill. Soon after Nina Singletary called the museum to especially let us know that we could get original mill bricks at the reunion. At a Remerton Reunion you get greeted with perfect chicken and dumplings, perfect chicken and rice, perfect acre peas, perfect creamed corn and the list goes on and on.

People, many now the children of Remerton mill employees, come from long distances to attend. During the function tribute was paid to Alma Smith, a former teacher at both the Remerton

Above: The line drawing of Strickland Cotton Mill is in the museum archives and is taken from the *Valdosta Times*, October 23, 1900, *Georgia State Fair Special Edition*. The mill had just opened. The museum provided copies of the above image at the reunion.



School and Remerton Methodist Church Sunday School. **Above:** Henry Bentley, who early worked at the Remerton commissary, and Frances Strickland Hatcher, descendant of mill founders. She told that his son Eddie just did a great job with her VHS Class of 1963 50th reunion. **Left:** Nina Singletary King, the heart of Remerton reunions and history, and program emcee, Kent Pafford of Jacksonville, FL. See more Remerton and Strickland Mill photographs and information on our website..



Vanished Valdosta Continues to Surface



Left:
405 N. Patterson

Before demolition the house in the photograph at left was located at this address. This approximate area is now the front entrance to the downtown U. S. Post Office and Federal Building



Left: John Dennis at the museum with photographs of 405 N. Patterson

Below Left: Baseball card of Roger Craig who once lived at 405 N. Patterson

Albeit slowly, images of former Valdosta and Lowndes County continue to be donated that fill in gaps of local history. Photos of the 405 N. Patterson house came to us from discussion on Class D professional baseball in Valdosta and Lynn Thomas' book on the subject *From Valdosta to the Major Leagues*.

John Dennis had attended Lynn Thomas' program on local professional baseball a few months ago and was aware that we were collecting items on that subject. He called the museum asking if we would like to scan his grandfather's Valdosta Baseball Booster Club Membership Card. It was from the last season, 1958. We had no other booster card from Valdosta pro baseball in our archives, physical or electronic, so we told him yes and thank you.

In discussing the baseball card and his grandfather, W. I. Dennis, Sr., John told that his grandparents used to rent rooms to baseball players. This led to discussion about baseball players and the house.

John Dennis told that in 1950 Roger Craig, who would go to the major leagues for decades, lived in this home. Lynn Thomas reports in his book *From Valdosta to the Major Leagues* on Craig's career and that Craig responded to him in 2010 in writing. Thomas tells that Roger Craig is a retired right-handed pitcher, coach and manager whose major league career spanned nearly five decades. He was pitcher from 1955 to 1966, then pitching coach, and his last position was as manager of the San Francisco Giants 1985-1992. Craig stated in his letter to Lynn Thomas. "I am very proud of the fact that I played, coached and managed in the World Series. I am still married to my high school sweetheart, Carolyn, going on 60 years (and) I couldn't have done it without her.... I'm 81 years old and still hanging in there like I did in all my baseball career...(And) it all started in Valdosta, GA..."

John Dennis told us that his grandfather absolutely did not want to sell the home so it went through condemnation proceedings. It was the last house standing in this block. All four homes on the east side of this block are shown existing in the 1900 Sanborn Fire Insurance Maps. In the 1904 first City Directory 405 N. Patterson is owned by J. E. Culpepper, in 1908 by J. Y. Wisenbaker and in 1923 by R. C. Hines. For many years in the 1930s and '40s the block shows the same residents: 401 N., J.F. and Mary Lewis, Caro Lewis; 405 N., W. I. Dennis; 407 N., A.L. Girardin; and 409 N., J. H. and Susie Sims. We have a photo of the Lewis home at the museum. Photos of 407 N. and 409 N., and others, would continue adding to the collection of vanished Valdosta homes.



Researchers, Tourists, Senior Groups, School Groups



St. Johns school eighth graders

Jingle Bells Christmas Tree

Due to employee schedules the Jingle Bells tree was assembled earlier than usual this year at the beginning of November. The tree is also an exhibit for the museum as it tells the story of Jingle Bells author James Lord Pierpont living in Valdosta at one time. It was so enjoyed that we may continue to have our "Tree Exhibit" ready for November each year. **Left upper:** Mrs. Pam Rickman's St. Johns school eight grade history class. Mrs. Rickman has a prepared study guide for this group at the museum. They hope to use the "Jingle Tree" photo in their school yearbook. **Left middle:** Elizabeth Baptist Church seniors, Y. E. S. Group at the Jingle Bells Christmas Tree. They came up from Jefferson County/ Monticello, Florida for museum presentations. They were then going to Crystal River Seafood Restaurant, then Hobby Lobby and new Agri-Supply on US84 west. **Below Upper:** Open Bible School second graders at the tree. They participated in the slide show and historic scavenger hunts. **Left lower:** Happy Times Day School students smile after completing scavenger hunts. **Below bottom:** Teacher Gina Melton with students at the Jingle Bells Tree before they left the museum. They watched the slideshow and completed the scavenger hunts.



Elizabeth Church seniors group



Open Bible Christian School second graders



Kids from Happy Times Day School at the museum



Sallas-Mahone third grade gifted class at the museum

Salzbergers, Scouts, the Sun Belt Expo and More



The Polla's of Minnesota

At top right are Mike and Doris Polla of Garvin, Minnesota. They were staying in Valdosta to attend the Sun Belt Expo. They contract vegetable farm specifically for grocery chains. They especially enjoyed the museums agricultural exhibits. We had visitors from Montana and Manitoba, during the same period. **At right center:** Ken and Jacqueline Riggs from Kanab, Utah. They were on a long awaited trip to the southeast. She learned about her Salzberger ancestry and was looking for information on Linebergers and Zeiglers.

Bottom right: Laurie McCall and Rose Ware look at Readers Forum historic scrapbooks on display at their 80th Anniversary celebration at Valdosta Country Club. They are archived at the museum. They include correspondence with the governor of California in the 1930s after the group read John Steinbeck's **The Grapes of Wrath**. **Below upper:** Thressea Boyd, VSU Director of Communications, found the specific information she needed for the college recognition of 50 Years of Integration. **Below lower:** Emily Jack of Girl Scout troop number 40460 presents Hannah Parker with geo-caching brochures of historic buildings and markers in the Valdosta. The geo-cache includes the museum.



The Riggs from Utah



Thressea Boyd, Director of Communications at VSU



Readers Forum 80th Celebration: McCall and Ware



Scout Brochure: Jack and Parker

Memorials



Helen Pafford Bennett

by
Donald O. Davis
Patsy T. Giles
Earle S. McKey, III
J. Edward Willis

Ann Ward Cork

Robert L. Cork

by
Donald O. Davis
Patsy T. Giles

Loren Drue Dodson

by
J. Edward Willis

John Thomas 'J. T.' Griffin

by
J. Edward Willis

Betty Phillips Gooze

by
Donald O. Davis
Patsy T. Giles
J. Edward Willis

Brenda Williams Hatcher

by
Donald O. Davis
Patsy T. Giles

Charles W. Hatcher

by
Eleanor Morgan Howard
Riley and Jenny B. Howard

Angela Griffin Hughes

by
Donald O. Davis
Patsy T. Giles

Harley Langdale, Jr.

by
Eleanor Morgan Howard

Jean Rogers Malone

by
Rebecca Anne Odom

Rebecca Caldwell Odom

by
J. Edward Willis

James Stephen Oliver

by
Mr. and Mrs. Wade H. Coleman
Patsy T. Giles

Clarence Mathews Paine, Sr.

by
Eleanor Morgan Howard

Dr. Malcolm F. Rainey

by
Donald O. Davis
Eleanor Morgan Howard
Hank and Claire S. Lee
J. Edward Willis

Edwina 'Bootsie' Roberts Smotherman

by
Betty H. Chason
George L. and Lucille Converse
Cincinnati, OH
Donald O. Davis
John K. and Susan Dukes
Jane L. Ferrell
Patsy T. Giles
Hank and Claire S. Lee
Earle S. McKey, III
Catherine L. Redles
Dr. H. Briggs and Lane Smith
Morris Smith

Betty Meeks Bass Thackrey

by
Earle S. McKey, III

Robert E. Wallace

by
Mr. and Mrs. J. Edward Willis

Robert Nelson Warlick, Jr.

Augusta, GA
by
J. Edward Willis

Jane Burr Rogers Willis

by
W. D. 'Butch' and Jane F. Burgsteiner
John K. and Susan Dukes
Jane L. Ferrell
Mr. and Mrs. John B. Lastinger
Hank and Claire S. Lee
Rebecca Anne Odom
Rose Marie Sinnott
Dr. H. Briggs and Lane Smith
Mitchell and Lota Smith
Morris W. Smith
George T. and Polly Talley

Family Memorial

Everett Daniel Odom, Sr. Rebecca Eugenia Caldwell Odom

Please accept this donation in
memory of Mr. and Mrs. Everett Daniel
Odom, Sr. Our parents
taught us to appreciate our
heritage and we developed
a love of history.
We thank you for the services you
provide for the community.

Sincerely,
The Odom Family

Mail to: LCHS
P.O. Box 56
Valdosta, GA 31603

2014 Membership Application

Lowndes County Historical Society

Name _____
Address _____
Phone _____
Email _____

Membership Category

Individual \$25. ____
Family 30. ____
Business 50. ____
Contributing 100. ____
Patron 250. ____

MUSEUM CALENDAR OF EVENTS

Civil War Sesquicentennial Exhibit.....March

Officers and Executive Committee

President, Patsy Giles; 1st Vice President, T. Davy Shelton; 2nd Vice President, Martha N. Gibson; Secretary, Joseph Tomberlin; Treasurer, Redden Hart; Past President, Julie Smith; Mary McRee, and Anita Shelton

Lowndes County Historical Society & Museum

305 West Central Avenue
P.O. Box 56 Valdosta, GA 31603
(229) 247-4780

Fax: (229) 247-2840

E-mail: ddavis.lchs@gmail.com

Web page:

<http://www.valdostamuseum.com>

YESTERDAY & TODAY

Newsletter of

Lowndes County Historical Society

Newsletter Editor

Donald O. Davis

Newsletter Assistant

Adam Doughty

Museum Staff

Donald O. Davis

Executive Director

Amy Brown

Textiles and Research.

Hannah Parker

Harry S. Evans

Special Collections and Research

Adam Doughty

Drew Johnson

Social Media

YESTERDAY & TODAY

is a trademark of the
Lowndes County Historical Society.

Return Service Requested

Lowndes County Historical Society
P.O. Box 56
Valdosta, Georgia 31603-0056

Non-Profit
U S POSTAGE
PAID
Valdosta GA
PERMIT 13